



VEHICLE INSPECTION & WORKSHOP EQUIPMENT



EXPERTISE

RESEARCH & DEVELOPMENT

DESIGN & MANUFACTURING

COMMITMENT



www.capelec.com





SUPPORTING TOMORROW'S MOBILITY

Anticipating changes

For 30 years, Capelec has been offering mobility professionals innovative measurement and control equipment. Improving air quality and road safety are major challenges. The solutions developed aim to improve transport conditions, while respecting the environment.

Centralized design and manufacturing

The Capelec design office imagines and develop equipment in South of France. This is also where the production site and the technical support are located. A centralization that ensures efficiency and reactivity.



Innovation and Quality

20% of the teams dedicated to research and development

Capelec offers a range of equipment dedicated to pollution control and vehicle safety : braking, suspension, slip control, exhaust emissions and lighting. Innovative and ergonomic equipment that meets the most demanding expectations of the sector's players.



Our teams are at your service.



+33 (0)4 67 156 156
contact@capelec.com

INTERNATIONAL INVOLVEMENT

Capelec exports in more than 50 countries.

Our equipment is operated on all continents and latitudes.

Capelec is also an active member of main associations.



CAPELEC SAS

1130 rue des Marels Parc Euréka
34000 Montpellier FRANCE

☎ +33 (0)4 67 156 156

✉ contact@capelec.com

CAPELEC DEUTSCHLAND GMBH

Gewerbestraße 8
87787 Wolfertschwenden DEUTSCHLAND

☎ (+49) 08334/98 95 323

✉ capelec.deutschland@capelec.de

CAPELEC INDIA PVT. LTD.

Mez & 1st Floor, A-83,
Okhla Industrial Area, Ph-II,
New Delhi - 110020 INDIA

☎ +91-9654117338

✉ capelec.india@capelec.com



OUR GUARANTEES



RELIABILITY AND PERFORMANCE

Our equipment benefits from our expertise in control and measurement, and embeds the most innovative technologies.



TRAINING

We train technicians in the installation and maintenance of equipment. The offer is adapted to your needs.



AN INTEGRATED RANGE

Complemented by accessories and options, the equipment can be sold separately or combined.



ASSISTANCE

The remote maintenance service support you through the remote control of your connected equipment.



WARRANTY

Secure your future equipment purchases with our extended warranty service.



CERTIFICATION

Audits carried out each year attest that our products and services and services meet the requirements of the ISO 9001:2015 standard.

 www.capelec.com



ONLINE CATALOG

All references are available on Capelec website.



EMISSIONS



BRAKING



LIGHTING



EOBD



FOLLOW US !

Discover our videos on our Youtube channel.

Achievements

Tutorials for use

Maintenance

Also mett us on



INSPECTION | WORKSHOP EQUIPMENT



EMISSIONS

COMBINED STATIONS	8
GAS ANALYSERS	10
SMOKEMETERS	12
PARTICLE COUNTERS	13
EOBD SCANTOOLS	18
MEASURING AND COMMUNICATION DEVICES	20



LIGHTING

MECHANICAL HEADLIGHT TESTERS	24
CONNECTED HEADLIGHT TESTERS	24
WORKSHOP HEADLIGHT TESTERS	25
AUTOMATED HEADLIGHT TESTER	26



BRAKING

EXTRA LARGE AND LIGHT VEHICLES TEST LANE	30
HEAVY GOODS VEHICLES TEST LANE	32
2, 3 AND 4 WHEELS BRAKE TESTERS	34
TEST LANES AND BRAKE TESTERS COMBINATIONS	36
PLAY DETECTORS	40
DECELEROMETER	41

OTHER TESTERS

PINCH FORCE TESTER	44
TINT GLASS METER	44
TAXIMETER TEST BENCH	44
SONOMETER	45



INSPECTION LINES

FULL TEST LANES	48
MOBILE TEST LANES	49



EMISSIONS

INSPECTION & WORKSHOP EQUIPMENT

COMBINED STATIONS	8
GAS ANALYSERS	10
SMOKEMETERS	12
PARTICLE COUNTERS	13
EOBD SCANTOOLS	18
MEASURING AND COMMUNICATION DEVICES	20

COMBINED STATIONS **GAS ANALYSERS + SMOKEMETERS**

Trolley in option

CAP3201 STANDALONE

4 gas analyser & Smokemeter

Central unit | LCD display & 5 key keyboard

Built-in thermal printer | S3201 software

RPM inductive and piezo sensor

CAP3030 BT Smokemeter cell

4 gas : CO, CO₂, HC, O₂

Sampling probes | Oil temperature sensor

CAP3201EX-GO

GAS ANALYSER TECHNICAL SPECIFICATIONS

Complying with standards : OIML R99, Class 0, ISO 3930, BAR 97, MID

HC : Range 0 - 10 000 ppm (C₆H₁₄)

CO : Range 0 - 15 %

CO₂ : Range 0 - 20%O₂ : Range 0 - 25 %**SMOKEMETER TECHNICAL SPECIFICATIONS**

Complying with standards : ISO 11614, NFR 10-025

• Opacity range : 0,00 to 9,99 m⁻¹• Opacity resolution : 0,01 m⁻¹

✔ Dual modes : Inspection & Workshops

**CAP3550 VOYAGER**

Carryable 4 gas analyser & Smokemeter



Suitcase 1 : CAP3010 built-in 4 gas analysis module

Suitcase 2 : Laptop & accessories

CAP3030 BT wireless Smokemeter cell

4 gas : CO, CO₂, HC, O₂ | S3550 software

Sampling probes

Oil temperature probe

CAP3550EX-GO

GAS ANALYSER TECHNICAL SPECIFICATIONS

Complying with standards : OIML R99, Class 0, ISO 3930, BAR 97, MID

HC : Range 0 - 10 000 ppm (C₆H₁₄)

CO : Range 0 - 15 %

CO₂ : Range 0 - 20%O₂ : Range 0 - 25 %

Lambda : Range 0 - 9,99

SMOKEMETER TECHNICAL SPECIFICATIONS

Complying with standards : ISO 11614, NFR 10-025

• Opacity range : 0,00 to 9,99 m⁻¹• Opacity resolution : 0,01 m⁻¹

✔ Dual modes : Inspection & Workshops

**CAP3500 TABLET**

4 gas analyser & Smokemeter



10" tablet | Module holder

Wireless communication | S3500 software

4 gas : CO, CO₂, HC, O₂

CAP3010 built-in 4 gas analysis module

CAP3030 BT wireless Smokemeter cell

Sampling probes

Oil temperature probe

CAP3500EX-GO8

GAS ANALYSER TECHNICAL SPECIFICATIONS

Complying with standards : OIML R99, Class 0, ISO 3930, BAR 97, MID

HC : Range 0 - 10 000 ppm (C₆H₁₄)

CO : Range 0 - 15 %

CO₂ : Range 0 - 20%O₂ : Range 0 - 25 %

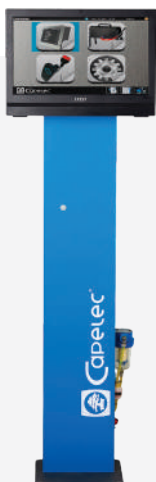
Lambda : Range 0 - 9,99

SMOKEMETER TECHNICAL SPECIFICATIONS

Complying with standards : ISO 11614, NFR 10-025

• Opacity range : 0,00 to 9,99 m⁻¹• Opacity resolution : 0,01 m⁻¹

✔ Dual modes : Inspection & Workshops



CAP3600 TOTEM

4 gas analyser & Smokemeter



22" touchscreen

Totem pole | Accessories storage | Remote control

Wireless communication | S3600 software

CAP3010 built-in 4 gas analysis module

Sampling probes | Oil temperature probe

CAP3030 BT wireless Smokemeter cell

CAP3600EX-GOM

GAS ANALYSER TECHNICAL SPECIFICATIONS

Complying with standards : OIML R99, Class 0, ISO 3930, BAR 97, MID

HC : Range 0 - 10 000 ppm (C₆H₁₄)

CO : Range 0 - 15 %

CO₂ : Range 0 - 20%

O₂ : Range 0 - 25 %

Lambda : Range 0 - 9,99

SMOKEMETER TECHNICAL SPECIFICATIONS

Complying with standards : ISO 11614, NFR 10-025

- Opacity range : 0,00 to 9,99 m⁻¹

- Opacity resolution : 0,01 m⁻¹

✔ Dual modes : Inspection & Workshops



CAP3500 WORKSHOP TABLET

Tablet Expert combined station
Pre-inspection diagnosis



5 gas : CO, CO₂, HC, O₂, NOx

Expert report

CAP3030 BT wireless Smokemeter cell

CAP8533 RPM module | CAP4350 EOBD module

S3500 Workshop software

MID certified | EC approved

Self commissioning

CAP3500EX-5GO4

GAS ANALYSER TECHNICAL SPECIFICATIONS

Complying with standards : OIML R99, Class 0, ISO 3930, BAR 97, MID

HC : Range 0 - 10 000 ppm (C₆H₁₄)

CO : Range 0 - 15 %

CO₂ : Range 0 - 20%

O₂ : Range 0 - 25 %

Lambda : Range 0 - 9,99

NOx : Range 0 - 5 000 ppm

SMOKEMETER TECHNICAL SPECIFICATIONS

Complying with standards : ISO 11614, NFR 10-025

- Opacity range : 0,00 to 9,99 m⁻¹

- Opacity resolution : 0,01 m⁻¹



CAP3600 WORKSHOP TOTEM

PC Expert combined station
Pre-inspection diagnosis



5 gas : CO, CO₂, HC, O₂, NOx

Expert report

CAP3030 BT wireless Smokemeter cell

CAP8533 RPM module | CAP4350 EOBD module

S3600 Workshop software

MID certified | EC approved

Self commissioning

CAP3600FRWS-GOM

GAS ANALYSER TECHNICAL SPECIFICATIONS

Complying with standards : OIML R99, Class 0, ISO 3930, BAR 97, MID

HC : Range 0 - 10 000 ppm (C₆H₁₄)

CO : Range 0 - 15 %

CO₂ : Range 0 - 20%

O₂ : Range 0 - 25 %

Lambda : Range 0 - 9,99

NOx : Range 0 - 5 000 ppm

SMOKEMETER TECHNICAL SPECIFICATIONS

Complying with standards : ISO 11614, NFR 10-025

- Opacity range : 0,00 to 9,99 m⁻¹

- Opacity resolution : 0,01 m⁻¹

GAS ANALYSERS



Trolley in option

CAP3201 STANDALONE

4 gas analyser

Central unit | LCD display & 5 key keyboard

Built-in thermal printer | S3201 software

RPM inductive and piezo sensor

4 gas : CO, CO₂, HC, O₂

Sampling probe | Oil temperature sensor

CAP3201EX-G

GAS ANALYSER TECHNICAL SPECIFICATIONS

Complying with standards : OIML R99, Class 0, ISO 3930, BAR 97, MID

HC : Range 0 - 10 000 ppm (C₆H₁₄)

CO : Range 0 - 15 %

CO₂ : Range 0 - 20%O₂ : Range 0 - 25 %

Lambda : Range 0 - 9,99

NOx : Range 0 - 5 000 ppm

 Dual modes : Inspection & Workshops
**CAP3500 TABLET**

4 gas analyser

10" tablet | Module holder

Wireless communication | S3500 software

CAP3010 built-in gas analysis module

4 gas : CO, CO₂, HC, O₂

Sampling probe | Oil temperature probe

CAP3500EX-G8

GAS ANALYSER TECHNICAL SPECIFICATIONS

Complying with standards : OIML R99, Class 0, ISO 3930, BAR 97, MID

HC : Range 0 - 10 000 ppm (C₆H₁₄)

CO : Range 0 - 15 %

CO₂ : Range 0 - 20%O₂ : Range 0 - 25 %

Lambda : Range 0 - 9,99

NOx : Range 0 - 5 000 ppm

 Dual modes : Inspection & Workshops



CAP3550 VOYAGER

Carryable 4 gas analyser



Suitcase 1 : CAP3010 built-in 4 gas analysis module

Suitcase 2 : Laptop & accessories

Wireless communication | S3550 software

4 gas : CO, CO₂, HC, O₂

Sampling probe

Oil temperature probe

CAP3550EX-G

GAS ANALYSER TECHNICAL SPECIFICATIONS

Complying with standards : OIML R99, Class 0, ISO 3930, BAR 97, MID

HC : Range 0 - 10 000 ppm (C₆H₁₄)

CO : Range 0 - 15 %

CO₂ : Range 0 - 20%

O₂ : Range 0 - 25 %

Lambda : Range 0 - 9,99

✓ Dual modes : Inspection & Workshops



CAP3600 TOTEM

4 gas analyser

22" touchscreen

Accessories storage | Remote control

Wireless communication

4 gas : CO, CO₂, HC, O₂

Sampling probe

S3600 software

Dual modes : Inspection, Repair

CAP3600EX-GM

GAS ANALYSER TECHNICAL SPECIFICATIONS

Complying with standards : OIML R99, Class 0, ISO 3930, BAR 97, MID

HC : Range 0 - 10 000 ppm (C₆H₁₄)

CO : Range 0 - 15 %

CO₂ : Range 0 - 20%

O₂ : Range 0 - 25 %

Lambda : Range 0 - 9,99

NOx : Range 0 - 5 000 ppm

✓ Dual modes : Inspection & Workshops

SMOKEMETERS



Trolley in option

**CAP3200 STANDALONE**

Smokemeter

Central unit | LCD display | 5 key keyboard

CAP3030 BT Smokemeter cell

Built-in thermal printer | S3201 software

Piezo sensor

Sampling probe | Oil temperature sensor

CAP3200EX-O

SMOKEMETER TECHNICAL SPECIFICATIONS

Complying with standards : ISO 11614, NFR 10-025

- Opacity range : 0,00 to 9,99 m⁻¹
- Opacity resolution : 0,01 m⁻¹

 Dual modes : Inspection & Workshops
**CAP3550 VOYAGER**

Smokemeter



Tablet | Suitcase

Wireless communication

CAP3030 BT wireless Smokemeter cell

Sampling probe | S3550 software

CAP3500EX-O8

SMOKEMETER TECHNICAL SPECIFICATIONS

Complying with standards : ISO 11614, NFR 10-025

- Opacity range : 0,00 to 9,99 m⁻¹
- Opacity resolution : 0,01 m⁻¹

 Dual modes : Inspection & Workshops
**CAP3600 TOTEM**

Smokemeter



22" touchscreen

Totem | Accessories storage | Remote control

Wireless Bluetooth communication

CAP3030 BT wireless Smokemeter cell

Sampling probe

S3600 software

CAP3600EX-OM

SMOKEMETER TECHNICAL SPECIFICATIONS

Complying with standards : ISO 11614, NFR 10-025

- Opacity range : 0,00 to 9,99 m⁻¹
- Opacity resolution : 0,01 m⁻¹

 Dual modes : Inspection & Workshops

PARTICLE COUNTERS



NEW

CAP3500 TABLET

Particle counter



Tablet | WIN OS | Suitcase

Extended Diffusion Charging technology

Wireless communication | S3500 software

Heated probe sampling probe

CAP3070 cell with trolley

Oil temperature sensor



CAP3500EX-P

PN TECHNICAL SPECIFICATIONSMeasuring range : 5 000 to 5 000 000 particles/cm³Resolution of indication : 1000 particles/cm³
 Dual modes : Inspection & Workshops


NEW

CAP3600 TOTEM

Particle counter



Extended Diffusion Charging technology

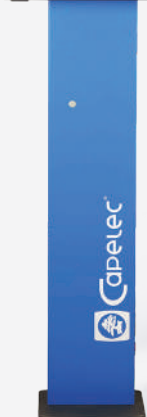
Wireless communication | S3600 software

Totem | PC Box

Heated probe sampling probe

CAP3070 cell with trolley

Oil temperature sensor



CAP3600EX-P

PN TECHNICAL SPECIFICATIONSMeasuring range : 5 000 to 5 000 000 particles/cm³Resolution of indication : 1000 particles/cm³
 Dual modes : Inspection & Workshops

COMMON OPTIONS

MEASUREMENT



PN particle counter module
Set to change into a combi unit
Extended Diffusion Charging technology

CAP3070-KIT



Motorbike gaz analyser set
Feet and ajustable support
Universal exhaust pipe adaptor
Exhaust pipe extension | Filtration

CAP3200-KITMOTO



HGV opacity smokemeter probe and hose
Heated probe | 2,50m long
Hose | 3,16m long

SSE01099

**Smokemeter hose**

1.5m PRO01028

2m PRO01030

3m PRO03602

3.5m PRO03817



HGV smokemeter extension pipe
Rod, pipe and handle
2m long
Storage handle

CAP3030-CPPL

CAP3030-CPPLC (heated)

RPM & OIL TEMPERATURE



Infrared temperature probe
Laser pointer | LCD screen
Bluetooth wireless connection | Powered 12V
Requires CAP1220

CAP1330



Tachometer & thermometer | Battery
Battery cable & cigar-lighter cables
Temperature probe | Bluetooth communication
Requires CAP1220

CAP8520



Thermometer & tachometer | Battery and Vibration
Temperature probe | Battery and cigar-lighter cables
LCD screen | Vibration sensor | Requires CAP1220

RS232 connection

CAP8533-RS

Wireless Bluetooth connection

CAP8533-BT

EOBD, MOBILITY, COMMUNICATION



Connected EOBD reader
Bluetooth | Wireless connection | Universal scan-tool | Range of vehicles : light vehicles, HGV
Cables and EOBD plug

CAP4350



Cell trolley
3 wheels | Brake | Handle
Compatible with opacity cell series CAP3030 & CAP3070

PRO03496



RPM connection | PC
Cable between PC and CAP8533

SSE00810-PC



Probe holder
To be positioned close to the exhaust pipe

PRO03030

CAP3201 OPTIONS

MEASUREMENT



NOx measurement set
Adaptable to CAP3201 series

CAP3201-NOX



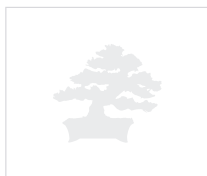
Smokemeter module CAP3030 v2
Set to upgrade a gas analyser into a combi unit
Complete cell probe, wires, connections

CAP3200-KITOPA-2



Tachometer on battery
CPU board
CAP3201 set
Battery cable & cigar-lighter cables

CAP3200-RPMBAT



RPM connection | CAP3201 TTL
Cable between CAP3201 and CAP8533

SSE00870

COMMUNICATION



Smokemeter connection
1m cable | Compatible with CAP3201 series | CAP85XX

SSE00057



WIN 3200 software | Windows OS
Operating with CAP32XX series
Dongle key | DVD | Connection cable

CAP3200-WIN3200



Keyboard
Wired | PS2 connector

AZERTY keyboard	PRO00518
QWERTY keyboard	PRO00968



Data encoder
Communication ports : USB, RJ45, RS232
Linux OS

RS232 connection	CAP1830F-R
Wireless Bluetooth connection	CAP1830F-B

MOBILITY



Workshop trolley | Wheel base | Steel frame
Compatible with CAP32XX series
Colours : grey, blue | CAPELEC branded

PRO03106



Power converter | Cigar lighter
12VDC/230V AC

PRO01807



RS232 converter to Bluetooth

CAP3201 control port antenna	CAP1220
CAP32XX PC communication antenna	CAP1223
CAP3030 smoke cell antenna	CAP1221

CAP3500/CAP3600 OPTIONS

MEASUREMENT



Smokemeter module CAP3030 v2 | Horizontal
 Upgrading a gas analyser into a combined unit
 Probe | Holder | Wireless connection
 Bluetooth | S3030 software | Power supply cable

CAP3600M-OPA2



4 gas analyser module | Wires & connectors
 Upgrading a smoke meter into a combined unit
 Temperature probe | Filters
 S3600 Software | MID approval

CAP3600M-GAZEU



Opacimax module CAP3040 | Vertical
 Probe | Holder
 Power supply cable
 Wireless connection | Bluetooth

CAP3600M-OPAM



NOx measurement set

CAP3600M-NOX

ERGONOMY



Additional screen
 With totem bracket

22" additional screen

CAP00941

22" additional touchscreen

CAP00945

27" additional touchscreen

CAP00947



IR remote control
 USB | infrared receiver
 Compatible with CAP9XXX & CAP3XXX series

CAP1000-RCIR-USB

CAP3600 OPTIONS

MOBILITY



Mobile base | Metal | Grey
4 steering wheels | Protective bumper | Brake
Compatible with CAPELEC totem

PRO03017

ERGONOMY



Keyboard holder | Adjustable
Adaptable to Capelec totem

PRO03029

STORAGE



Screen protective cover
Polyester fabrics | Black

PRO02686

EOBD SCANTOOLS

- ✓ CAP4120 FOR LIGHT VEHICLES
- ✓ CAP4150 FOR LIGHT AND HEAVY GOODS VEHICLES



EOBD READER STANDALONE

Keyboard | LCD screen display

Bluetooth | Wireless connection

Universal scantool

Protective case

Cables and EOBD plug

LV	CAP4120-EN
LV + HGV	CAP4150-EX

- ✓ CAP4350 FOR LIGHT & HEAVY GOODS VEHICLES



NEW

EOBD READER CONNECTED SPECIFICATIONS 6B

All brands and vehicle models

Light and easy to handle

Cable-free or extension cable operation

Compatible with CAP4220 & CAP4250

Transmission: Bluetooth

CAP4350

COMMUNICATION



Extension cable
EOBD extension cord

PRO04004

EOBD OPTIONS

COMMUNICATION



Data encoder

Communication ports : USB, RJ45, RS232
Linux OS

RS232 connection

CAP1830F-R

Wireless Bluetooth connection

CAP1830F-B

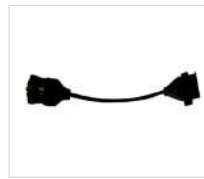
ACCESSORIES



Black holder | Screen protection

Compatible with CAP4120 series and CAP4150

PRO01055



Truck adaptor plug

OBD round connector
Heavy trucks

PRO01597



Shoulder strap

Protective cover | Black polyester
For CAP4120 & CAP4150 series

PRO02386

PRINTERS



Thermal printer | Wireless BT

Battery and charger

RS232 connection

CAP1000-IMPRS

Wireless Bluetooth connection

CAP1000-IMPBT

MEASURING AND COMMUNICATION DEVICES



TACHOMETER THERMOMETER

Handheld digital revolution counter

Dual mode : battery and vibration

Oil temperature

Connected | S8533 software

Universal : suitable for all types of vehicles

LCD screen

RS232 connection	CAP8533-RS
Bluetooth connection	CAP8533-BT



DATA ENCODER

Communication ports : USB, RJ45, RS232

S1830 software | Linux OS

RS232 connection	CAP1830F-R
Bluetooth connection	CAP1830F-B







LIGHTING

INSPECTION & WORKSHOP EQUIPMENT

MECHANICAL HEADLIGHT TESTERS	24
CONNECTED HEADLIGHT TESTERS	24
WORKSHOP HEADLIGHT TESTERS	25
AUTOMATED HEADLIGHT TESTER	26

HEADLIGHT TESTERS



CAP2100 MECHANICAL

Mechanical headlight tester

- Wheel base
- Laser positioning feature
- 1,8 m aluminium column
- Fresnel lens | Counterweight
- Lamps : halogen, xenon

CAP2100-W

TECHNICAL SPECIFICATIONS

Cut-off



CAP2300 ELECTRONIC PHOTODIODE

Photodiode headlight tester
S2300 software

- Wheel base
- Mirror positioning feature | 1,8 m column
- Multilanguage | LCD display
- Connection : RS232 communication port
- Counterweight | Fresnel lens
- Lamps : halogen, LED, xenon

CAP2300EX-WR

TECHNICAL SPECIFICATIONS

- Angle measurement
- Cut-off measurement : from +2% to -4%
 - Accuracy : +/- 0,2%
- Intensity measurement
- Cut-off measurement : 0/125 kcd or 0/200 lux
 - Accuracy : 10%
- Lateral : yes / no



CAP2500 WIRELESS CONNECTED

Photodiode electronic headlight tester
S2500 software

- Laser | 1,8 m column | Wheel base
- Multilanguage | LCD display
- Alignment assistance | Accurate light sensor
- Communication port : RS232 | Wireless BT module
- Including battery and charger
- Lamps : halogen, LED, xenon



	Wheel base	Rails base
Right drive	CAP2500EX-TDWB	CAP2500EX-TDRB
Left drive	CAP2500EX-TGWB	CAP2500EX-TGRB

TECHNICAL SPECIFICATIONS

- Angle measurement
- Cut-off measurement : from +2% to -4%
 - Accuracy : +/- 0,2%
- Intensity measurement
- Cut-off measurement : 0/125 kcd or 0/200 lux
 - Accuracy : 10%
- Lateral : yes / no

✔ Dual modes : Inspection & Workshops



CAP2600 CONNECTED WITH CAMERA



Electronic headlight tester
S2600 software
CCD camera

- _____ Laser | 1,8 m column | Wheel base
- _____ Color touch screen | Easy alignment assistance
- _____ OS Linux | Multilingual
- _____ Long lasting battery and charger
- _____ Lamps : halogen, LED, xenon, Matrix

	Wheel base	Rails base
Wired	CAP2600EX-W	CAP2600EX-S
Wireless	CAP2600EX-WW	CAP2600EX-SW

TECHNICAL SPECIFICATIONS

- Angle measurement
- Cut-off measurement : from +6% to -6%
 - Accuracy : +/- 0,2%
 - Side deviation : -10/+10 %
 - Yaw angle : -90/+90°
 - Roll angle : -90/+90°
- Intensity measurement
- Cut-off measurement : 0/125 kcd or 0/200 lux
 - Accuracy : 10%
- AFS adjustment

✔ Dual modes : Inspection & Workshops



CAP2600 PRINTER

Workshop electronic headlight tester
Integrated printer
CCD camera

- _____ Laser | 1,8 m column | Wheel base
- _____ Color touch screen
- _____ Easy alignment assistance
- _____ OS Linux | Multilingual
- _____ Long lasting battery and charger
- _____ Lamps : halogen, LED, xenon, Matrix

CAP2600AT-WIGA

TECHNICAL SPECIFICATIONS

- Angle measurement
- Cut-off measurement : from +6% to -6%
 - Accuracy : +/- 0,2%
 - Side deviation : -10/+10 %
 - Yaw angle : -90/+90°
 - Roll angle : -90/+90°
- Intensity measurement
- Cut-off measurement : 0/125 kcd or 0/200 lux
 - Accuracy : 10%
- AFS adjustment



CAP2600 WORKSHOP EXPERT

Expert electronic headlight tester
Pre-MOT diagnosis
Integrated printer

- _____ Expert report
- _____ Multi zone operation. ANYWHERE uneven ground compensation system
- _____ S2600 Workshop software
- _____ AFS adjustment | Matrix calibration
- _____ Self commissioning
- _____ Lamps : halogen, LED, xenon, Matrix

CAP2600WS-WIGA

TECHNICAL SPECIFICATIONS

- Angle measurement
- Cut-off measurement : from +6% to -6%
 - Accuracy : +/- 0,2%
 - Side deviation : -10/+10 %
 - Yaw angle : -90/+90°
 - Roll angle : -90/+90°
- Intensity measurement
- Cut-off measurement : 0/125 kcd or 0/200 lux
 - Accuracy : 10%
- AFS adjustment

HEADLIGHT TESTERS

**CAP2900 AUTOMATED**

Electronic headlight tester
CCd camera

Automated positioning and operation

Tilt compensation

1,7 m column | 5 positions LED head-up display

Color Touchscreen | OS Linux | S2900 software

Data exchange (ethernet)

Multilingual | Customized operation

2 IR barriers vehicle positioning

Wired power supply and communication (GIEGLAN)

4,5 m rails | Mouvement detection plate sensors

CAP2900EX-AF

TECHNICAL SPECIFICATIONS

Angle measurement

- Cut-off measurement : from +6% to -6%
- Accuracy : +/- 0,2%
- Side deviation : -10/+10 %
- Yaw angle : -90/+90°
- Roll angle : -90/+90°

Intensity measurement

- Cut-off measurement : 0/125 kcd or 0/200 lux
- Accuracy : 10%

AFS adjustment

✔ Dual modes : Inspection & Workshops

COMMON OPTIONS (EXCEPT CAP2900)

ERGONOMY



Set of metallic rail
1,5m length | Galvanised steel

CAP2500-OPTRAIL1.5

PRO03469



Protection cover
Black fabric

PRO02294



Handle
Metal

PRO02209



Brake set
Foot blocking

PRO02860



Removable and adjustable mirror
Column brackets

PRO02938

PRINTERS



Thermal printer | Wireless BT
Battery and charger

RS232 connection

CAP1000-IMPRS

Wireless connection

CAP1000-IMPBT

CAP2600 OPTIONS

ADD-ON



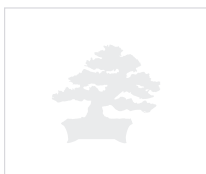
Optional powerport and transmission
Coiled cable 5-8m long | RJ45 connection
220V power supply

PRO03113



Outdoor protection cover
Black fabric | Protective window
Adjustable

PRO03177



Inclinometer module
Tilt compensation

SSE01009



Anywhere module
Pair | Laser pointer
Bluetooth communication
Ground compensation

SSE01169





BRAKING

INSPECTION & WORKSHOP EQUIPMENT

EXTRA LARGE AND LIGHT VEHICLES TEST LANE	30
HEAVY GOODS VEHICLES TEST LANE	32
2, 3 AND 4 WHEELS BRAKE TESTERS	34
TEST LANES AND BRAKE TESTERS COMBINATIONS	36
PLAY DETECTORS	40
DECELEROMETER	41

LIGHT & EXTRA LARGE VEHICLES TEST LANE

- ✓ CAP9010 FOR LIGHT VEHICLES
- ✓ CAP9020 FOR EXTRA LARGE VEHICLES



BRAKE TESTER

Initial set :

Galvanised steel frame
Aluminium rollers Epoxy
380V 3PH + N + EP power supply
3,7kW motor

Light vehicles initial set	CAP9010-BRA
Extra large vehicles initial set	CAP9020-BRA

BRAKE TECHNICAL SPECIFICATIONS

- Roller speed : 5km/h
- Maximum Axle load : 4t
- Maximum load per wheel : 2t
- Maximum force :
 - CAP9010 3,7kW motor : 750 daN
 - CAP9020 4kW motor : 900 daN
- Three phased power supply
- Path :
 - LV : 80-220cm
 - LARGE LV : 80-280cm

BRAKE DIMENSIONS

- LV brake tester : 232 x 69 x 28cm
- LARGE LV brake tester : 292 x 69 x 28cm



SUSPENSION TESTER

Initial set :

Galvanised steel frame
380V 3PH + EP power supply
3kW motor

Light vehicles initial set	CAP9010-SUS
Extra large vehicles initial set	CAP9020-SUS

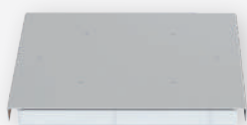
SUSPENSION TECHNICAL SPECIFICATIONS

- Maximum Axle load : 4t
- Maximum load per wheel : 2t
- Three phased power supply

SUSPENSION DIMENSIONS

- LV suspension tester : 232 x 43 x 28cm
- LARGE LV suspension tester : 292 x 43 x 28cm

- ✓ EUSAMA and phase shift method



SIDE SLIP TESTER

Initial set :

Galvanised steel frame

Light vehicles initial set	CAP9010-SIS
Extra large vehicles initial set	CAP9020-SIS

SIDE SLIP TECHNICAL SPECIFICATIONS

- Maximum load per wheel : 2t
- Deflection : +/- 20m/km

SIDE SLIP DIMENSIONS


- LV side slip tester : 73 x 52 x 7cm
- LARGE LV side slip tester : 85 x 52 x 7cm

CAP9010 | CAP9210 ADD-ONS

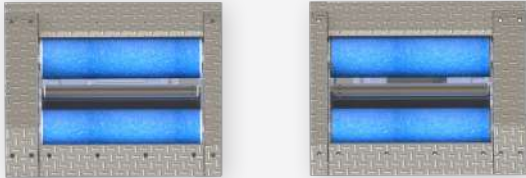
BRAKE TESTER ADD-ONS :	REF.
XS frame	<input type="checkbox"/> XSF
Winter tires rollers	<input type="checkbox"/> WTR
Soft starter	<input type="checkbox"/> SST
Exit assistance	<input type="checkbox"/> BLO
4WD mode	<input type="checkbox"/> FWD
Pedometer	<input type="checkbox"/> PED
Covering plates	<input type="checkbox"/> COV
2 wheels brake tester adapter	<input type="checkbox"/> TWB
Weighing sensor (if no suspension module)	<input type="checkbox"/> WEI
230V 3PH + EP power supply (4kW motor only)	<input type="checkbox"/> 230
CIVIL ENGINEERING FRAME ADD-ONS :	
Actia civil engineering adapter (232 x 18 x 28cm)	<input type="checkbox"/> CV1
MAHA civil engineering adapter (232 x 36 x 28cm)	<input type="checkbox"/> CV2

SUSPENSION TESTER ADD-ONS :	REF.
230V 3PH + EP power supply (3kW motor only)	<input type="checkbox"/> 230

CAP9010 | CAP9210 INTERFACE

 <p>INTERFACE</p> <p>Initial set :</p> <p>Compact control cabinet</p> <p>23' screen Software</p> <p>Qwerty keyboard, touchpad, holder</p> <p>INL</p>	INTERFACE ADD-ONS :	REF.
	Totem	<input type="checkbox"/> TOT
	23' touchscreen	<input type="checkbox"/> 23T
	27' screen	<input type="checkbox"/> 27N
	27' touchscreen	<input type="checkbox"/> 27T
	Azerty keyboard, touchpad, holder	<input type="checkbox"/> AZR
	IR remote control	<input type="checkbox"/> RIR
	HF remote control	<input type="checkbox"/> RGF
	Customised software	<input type="checkbox"/> NSO

HEAVY GOODS VEHICLES TEST LANE

**HGV BRAKE TESTER****Initial set :**

Galvanised steel frame

Steel rollers | Epoxy

230V or 400V 3PH + N + EP power supply

11kW motor | Twin-chain transmission

Soft starter

CAP9110-BRA

BRAKE TECHNICAL SPECIFICATIONS

- Roller speed : 2,5km/h
- Maximum load : 18t
- Maximum force : 40 000 daN
- Motor frequency : 50-60Hz
- Path : 800-2800mm

BRAKE DIMENSIONS

- 1350 x 800 x 570mm (x2)

**HGV SUSPENSION TESTER FOR LV TEST LANE****Initial set :**

Painted steel frame

230V or 400V 3PH + EP power supply

3kW motor

CAP9110-SUS

SUSPENSION TECHNICAL SPECIFICATIONS

- Axle in test weight (Max) : 3t
- Max. load per axle : 13t
- Three phased power supply
- Motor frequency : 50-60Hz

SUSPENSION DIMENSIONS

- 870 x 850 x 330mm (x2)

EUSAMA method

**HGV SIDE SLIP TESTER****Initial set :**

Painted steel frame

CAP9100EX-SS

SIDE SLIP TECHNICAL SPECIFICATIONS

- Maximum load per wheel : 18t
- Deflection : +/- 20m/km

SIDE SLIP DIMENSIONS


- 1020 x 780 x 95mm

CAP9110 ADD-ONS

BRAKE TESTER ADD-ONS :	REF.
Exit assistance	<input type="checkbox"/> BLO
230V 3PH + EP power supply (11kW motor only)	<input type="checkbox"/> 230V
15kW motor (motor brake, 400V 3PH + EP power supply only)	<input type="checkbox"/> 15K
4WD mode	<input type="checkbox"/> FWD
Pedometer	<input type="checkbox"/> PED
Covering plates	<input type="checkbox"/> COV
Load simulator	<input type="checkbox"/> LOS
Dual speed (2,5km/h 5km/h)	<input type="checkbox"/> DSP
Pressure sensor	<input type="checkbox"/> PRS
SAFETY ADD-ONS :	
Side barrier	<input type="checkbox"/> SIB
Warning light for barrier	<input type="checkbox"/> WLB
Self-closing gate	<input type="checkbox"/> SCG
Safety set (required with options below)	<input type="checkbox"/> SEC
Optical barrier for pit	<input type="checkbox"/> OPB
Secure remote control with emergency stop	<input type="checkbox"/> SRC
CIVIL ENGINEERING FRAME ADD-ONS :	
1 frame for civil engineering (without pit)	<input type="checkbox"/> 1FCV
2 frames for civil engineering (with pit)	<input type="checkbox"/> 2FCV
MAHA VTEQ civil engineering adapter	<input type="checkbox"/> CV1
ACTIA civil engineering adapter	<input type="checkbox"/> CV2

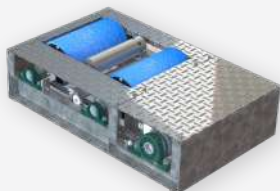
SUSPENSION TESTER ADD-ONS :	REF.
230V 3PH + EP power supply (3kW motor only)	<input type="checkbox"/> 230

CAP9110 INTERFACE

 <p>INTERFACE</p> <p>Initial set :</p> <p>Totem and electrical cabinet</p> <p>23' screen PC Software</p> <p>Qwerty keyboard, touchpad, holder</p> <p>INH</p>	INTERFACE ADD-ONS :	REF.
	23' touchscreen	<input type="checkbox"/> 23T
27' screen	<input type="checkbox"/> 27N	
27' touchscreen	<input type="checkbox"/> 27T	
4 screens repeater	<input type="checkbox"/> 4SR	
HF remote control	<input type="checkbox"/> RGF	
Totem alone	<input type="checkbox"/> TOT	
Azerty keyboard, touchpad, holder	<input type="checkbox"/> AZR	
Customised software	<input type="checkbox"/> NSO	

2, 3 AND 4 WHEELS BRAKE TESTERS

✓ CAP9410 FOR 2 WHEELERS



MOTORBIKES BRAKE TESTER

Initial set :

Galvanised steel frame

Aluminium rollers | Epoxy

380V 3PH + N + EP power supply

2,2kW motor

Exit assistance

Weighing sensor

CAP9410-BRA

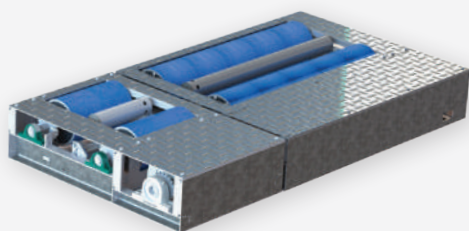
BRAKE TECHNICAL SPECIFICATIONS

- Roller speed : 5km/h
- Maximum load : 1t
- Maximum force : 300 daN

BRAKE DIMENSIONS

- 102 x 62 x 26cm

✓ CAP9420 FOR 2, 3 WHEELERS



MOTORBIKES, TRICYCLES & QUADS BRAKE TESTER

Initial set :

Galvanised steel frame

Aluminium rollers | Epoxy

400V 3PH + N + EP power supply

2 x 2,2kW motor

Exit assistance

Weighing sensor

CAP9420-BRA

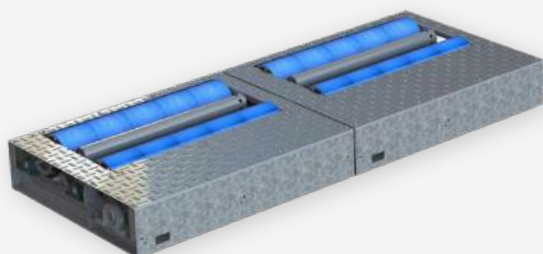
BRAKE TECHNICAL SPECIFICATIONS

- Roller speed : 5km/h
- Max. load per axle : 2t
- Maximum force : 300 daN per wheel

BRAKE DIMENSIONS

- 2 wheels module : 102 x 62 x 26cm
- 3 wheels module : 102 x 126 x 26cm

✓ CAP9430 FOR 2, 3, 4 WHEELERS



MOTORBIKES, TRICYCLES, QUADS & LIGHT VEHICLES BRAKE TESTER

Initial set :

Galvanised steel frame

Aluminium rollers | Epoxy

400V 3PH + N + EP power supply

2 x 2,2kW motor

Exit assistance

Weighing sensor

CAP9430-BRA

BRAKE TECHNICAL SPECIFICATIONS

- Roller speed : 5km/h
- Max. load per axle : 2t
- Maximum force : 300 daN per wheel

BRAKE DIMENSIONS

- 3 wheels module : 102 x 126 x 26cm (x2)

CAP9410 | CAP9420 | CAP9430 ADD-ONS

BRAKE TESTER ADD-ONS :	REF.
3,7kW motor for light vehicles	<input type="checkbox"/> 03K
230V 3PH + EP power supply	<input type="checkbox"/> 230V
Pedometer	<input type="checkbox"/> PED
Manometer	<input type="checkbox"/> MANO
Clamp and command	<input type="checkbox"/> CC
SAFETY ADD-ONS :	
Side barrier	<input type="checkbox"/> SIB
Warning light for barrier	<input type="checkbox"/> WLB
Optical emergency stop for rollers	<input type="checkbox"/> ORS

CAP9410 | CAP9420 | CAP9430 INTERFACE

**INTERFACE****Initial set :**

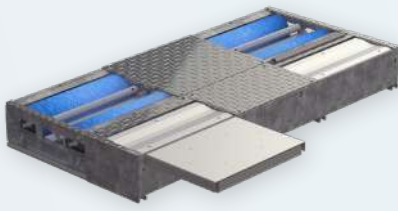
23' screen on totem | Software

Qwerty keyboard, touchpad, holder

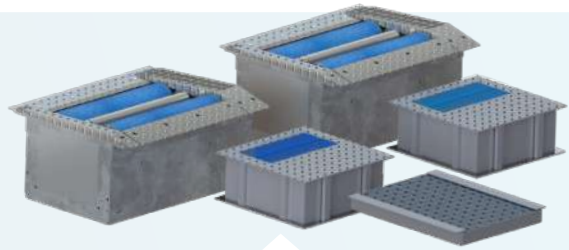
INM

INTERFACE ADD-ONS :	REF.
23' touchscreen	<input type="checkbox"/> 23T
27' screen	<input type="checkbox"/> 27N
27' touchscreen	<input type="checkbox"/> 27T
Azerty keyboard, touchpad, holder	<input type="checkbox"/> AZR
HF remote control	<input type="checkbox"/> RGF
Customised software	<input type="checkbox"/> NSO

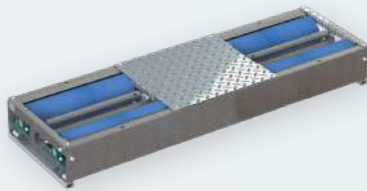
TEST LANES COMBINATIONS



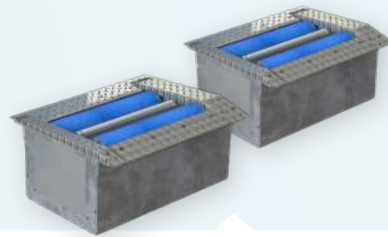
CAP9010 - CAP9020
BRAKE SUSPENSION SIDE SLIP TESTER
 For light and extra large vehicles.



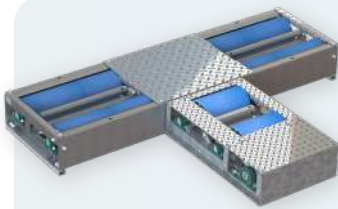
CAP9110
BRAKE SUSPENSION SIDE SLIP TESTER
 For heavy goods vehicles.



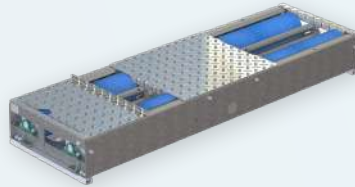
CAP9010 - CAP9020
BRAKE TESTER
 For light and extra large vehicles.



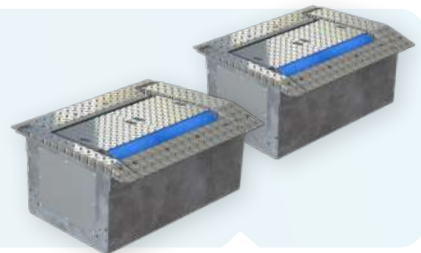
CAP9110
BRAKE TESTER
 For heavy goods vehicles.



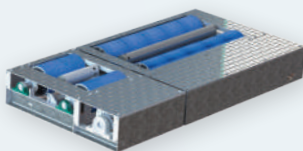
CAPxxx
BRAKE TESTER
 For light vehicles,
 2 and 3 wheelers.



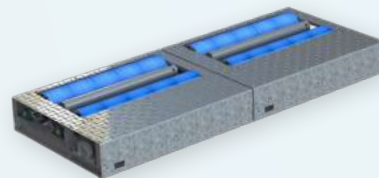
CAPxxx
BRAKE TESTER WITH PLATES
 For light vehicles and 2 wheelers.



CAPxxx
BRAKE TESTER WITH PLATES
 For heavy goods vehicles and 2
 wheelers.





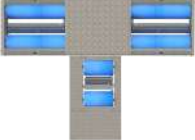





CAP9420
BRAKE TESTER
 For motorcycles, tricycles
 and quads.



CAP9430
BRAKE TESTER
 For motorcycles, tricycles, quads
 and light Vehicles.

VEHICLE CATEGORIES

	L1e	L2e	L3e	L4e	L5e	L6e	L7e	LV	HGV
 CAP010 CAP9020								✓	
 CAPxxx	✓		✓					✓	
 CAP9110									✓
 CAPxxx								✓	✓
 CAPxxx	✓	✓	✓	✓	✓	✓	✓	✓	
 CAP9410	✓		✓						
 CAP9xxx	✓	✓	✓	✓	✓				
 CAP9420	✓	✓	✓	✓	✓				
 CAP9430		✓		✓	✓	✓	✓	✓	

LV & LV+ OPTIONS

**Pedometer**

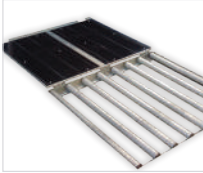
Foot-pedal sensor
Wireless BT connection
CAP90x0 brake testers series

CAP9520

**Free rollers set**

2 sets of 5 rollers
Transport handle | Aluminium frame

CAP9000-RF

**Recessed free rollers set**

4 units | Protective cover
Set of 8 rollers
Flush mounted

CAP9000-RFE

**IR remote control**

USB | infrared receiver
Compatible with software for CAP9000 &
CAP9600 series

CAP1000-RCIR-USB

**HF remote control**

USB | HF receiver
Compatible with software for CAP9000 &
CAP9600 series

CAP1000-RCHF-USB

HGV OPTIONS

**Free rollers**

2 sets of 3 rollers
Maximum load : 16 t
Protective cover

CAP9682

**Load simulator**

CAP9110-SIM

**Cover plate**

Set of 4
Steel

PRO04016

**Wall mount for screen**

Max. load 25kg

PRO04176

**PC keyboard support**

PRO03029

**Repeater Totem**

Column + 27" screen
Height 1.80m

CAP91XX-OTRL

**Remote control with emergency stop**

Charging base
Secure 433-434 MHz transmission
64 channels

CAP91XX-SAU

**Column for repeater screen**

Column only
Height 2.40m
For 22"-27" screen

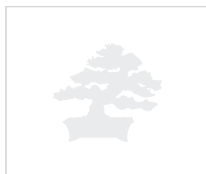
PRO04288

INTERFACE OPTIONS



Printer and storage cabinet
A4 laser printer | USB port

SSE01220



Storage cabinet
A4 printer cabinet | 2 shelves
Size 500 x 500 x 920

PRO04008



Printer
Inkjet printer | A4 size

PRO03790



PC screen protective cover
Polyester fabrics | Black

PRO02686



Repeater screen
Extra 22" display screen

CAP00941

PLAY DETECTORS

✓ CAP9200-LEH FOR LIGHT VEHICLES



LV PLAY DETECTOR

Electro-hydraulic operation

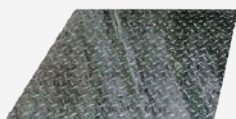
Maximum axle load/wheel load: 3 tons / 1,5 tons

Maximum working pressure: 175 bar

Longitudinal/transversal force: 8 kN

Longitudinal/transversal movement: 50 mm

Remote control



Play detector (400V Tri)	CAP9200-LEH
Play detector (230V Tri)	CAP9201-LEH
Set of hoses	PRO03504
Frame	PRO02799

TECHNICAL SPECIFICATIONS

- Movement speed: 60 mm/sec
- Cable length: 6,5 m
- Dimensions platform SM: 740 x 580 x 60 mm
- Dimensions platform FM: 690 x 700 x 60 mm
- Motor: 1,5 kW, 3PH+N+E 400V / 50Hz / 16A slow

✓ CAP9210-PEH HEAVY GOODS VEHICLES

NEW

HGV PLAY DETECTOR SPECIFICATIONS 7A

Compatible with most civil engineering

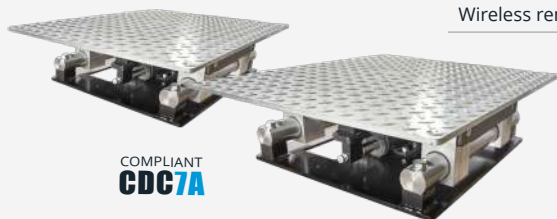
Compact frame or replacement adapter

Electro-hydraulic operation

Maximum load per wheel : 10 tons (passage)

Flush to the slab galvanized steel plates

Wireless remote control



COMPLIANT
CDC7A

Play detector (400V Tri)	CAP9210
Play detector (230V Tri)	CAP9211
Set of hoses	PRO04395
Creation rame	PRO04371
Adapter frame for MAHA	PROxxx
Adapter frame for Actia	PROxxx

TECHNICAL SPECIFICATIONS

- Plate dimensions : 800 x 690 mm
- Frame dimensions : 212 x 550 x 600 mm
- Force per plate : 30 KN
- Movements : Longitudinal | Transversal | Diagonal
- Cylinder stroke : 100 mm
- Displacement speed : 70 mm/second
- Motor : 4 kW, 3 phases +N +Earth 400v/50hz
- Coating : Hot dipped galvanized steel

DECELEROMETER



CAP9500



Brake force tester
 RS232 and wireless ports | LCD screen
 PC report
 S9500 software

Complete set :

Suction pad
 PC report
 Protective storage case
 Wires

TECHNICAL SPECIFICATIONS

- 3D sensor
- LCD screen
- S9500 software

Module	CAP9500EX-E
Complete set	CAP9500EX-B

COMMUNICATION



Thermal printer | Wireless BT
 Battery and charger

RS232 connection	CAP1000-IMPRS
Wireless Bluetooth connection	CAP1000-IMPBT

ERGONOMY



Manometer
 Hand pressure gauge

CAP9500A-CFM



Pedometer
 Foot-pedal pressure gauge

CAP9500A-CFP



Bus door pressure
 Bus door pressure gauge

CAP9500A-CFPA



Universal crowbar
 Motorbike
 Fitting for handlebars

SSE01044





OTHER TESTERS

PINCH FORCE TESTER	44
TINT GLASS METER	44
TAXIMETER TEST BENCH	44
SONOMETER	45

OTHER TESTERS



PINCH DOOR FORCE TESTER

CAP9550 series

Measurement of doors and gates closing force

Precision measurements

Single operation button box | LCD display

Arm simulator | Carrying case

Bluetooth connexion | data transmission

Powered : sector and battery

CAP1000 portable printers (optional)

Calibration certificate

CAP9550



TINT GLASS METER

CAP5600 series

Measurement of the tint of the glass

Light transmittance and light reflectance tester

Long lasting battery | Suction pad

LCD display | Case

CAP5600



TAXIMETER TEST BENCH

CAP9650 series

Inspection of taximeters

Light vehicle compatibility

Easy access rollers | S9650 software

12 rolls mechanism

Light operation indicator

Metallic frame | Tablet | Wireless controler

Compatible with ESP, ASR, VSA, VSC, ESC systems

CAP9650-CTL



SONOMETER

Digital sound level meter

Display 3,2" | Class 1

USB connection

Power supply

Simultaneous measurement

Storage case

PRO03982





INSPECTION LINES

FULL TEST LANES	48
MOBILE TEST LANES	49

FULL TEST LANES

Complete inspection solution
Data centralization
Simplified implementation and upgrade

✓ CAP20000 FOR LIGHT VEHICLES, HEAVY GOODS VEHICLES AND 2 WHEELERS



EQUIPMENT



2 WHEELER



LV



HGV

Emission testing

	2 WHEELER	LV	HGV
Gas analyser	✓	✓	
Smokemeter		✓	✓
Particle counter	✓	✓	✓
EOBD scantool	✓	✓	✓
Tachometer	✓	✓	✓

Lighting

	2 WHEELER	LV	HGV
Headlight tester	✓	✓	✓

Brake testers

	2 WHEELER	LV	HGV
Brake tester	✓	✓	✓
Suspension tester		✓	✓*
Side slip tester		✓	
Play detectors		✓	✓
Decelerometer	✓	✓	✓

Other testers

	2 WHEELER	LV	HGV
Taximeter test bench		✓	
Sonometer	✓	✓	✓

CAP20000

* Mixed test lane

MOBILE TEST LANES

Fast implementation
Easy road side operation

✓ CAP CHRONO 10410 FOR LIGHT VEHICLES



FULLY TRANSPORTABLE LV BRAKE TESTER

Platform :

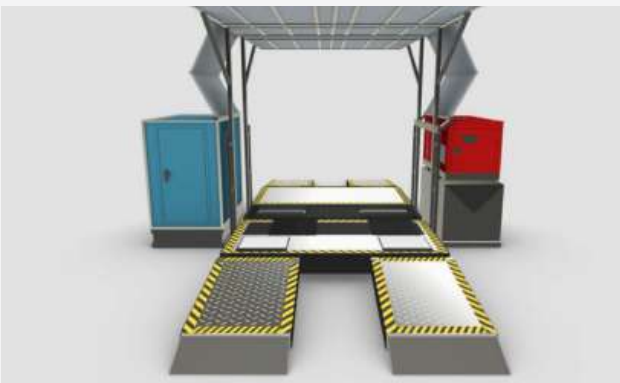
ISO 20' container
Weight 5000 kg | 10' rollout | Power supply 400V
4 ramps : 2 x 0,6 m | 2 axles
Ball trailer head (matching LVU)
Power generator 11 kVA + cable
Galvanized structure

Test lane :

4 m² office with air conditioning A/C
Desk with PC and laser printer
PTI / MOT software management
Roller brake tester & suspension tester
Side slip tester & play detector (optional)
Petrol & diesel emission testers
Headlight tester

CAP CHRONO 10410

✓ CAP CHRONO 10510 FOR HEAVY GOODS VEHICLES



FULLY TRANSPORTABLE HGV BRAKE TESTER

Platform :

ISO 20' container
Weight 6000 kg | 10' rollout
12 m semitrailer (king pin) | 3 axels
4 hydraulic supports | Power generator 25 kVA
Inspection area : 4 x 8 x 5 m
Galvanized structure

Test lane :

5 m² office with air conditioning A/C
Desk with PC and laser printer
PTI / MOT software management
Roller brake tester & suspension tester
Side slip tester & play detector (optional)
Petrol & diesel emission testers
Headlight tester

CAP CHRONO 10510



Follow us



General Terms Conditions of Sale

Prices

- All prices are net in EUR. The prices applied are those published in the International Price List valid on the date of invoicing. Prices are exclusive of any applicable sales tax, value added tax or assimilated taxes, fees, import duties or other duties, insurance, transport and handling charges.

Payment

- Payment terms shall be discussed between CAPELEC and its customer at the moment of the offer writing. Invoices not paid within the due date shall thereafter bear overdue charges at the rate of 2% per month on the unpaid balance until paid in full. If in CAPELEC's opinion the purchaser's financial situation does not justify performance, production or shipment on the terms of payment specified, CAPELEC may require full or partial payment in advance before shipment. CAPELEC may discontinue or delay continuance of performance or production if the purchaser fails to pay any moneys due. - If an unpaid amount is deemed uncollectable and transferred to a third party for the purpose of collection, any fees incurred are the responsibility of the purchaser and must be paid in full to CAPELEC or its assigned agent.

- The amount of any present or future taxes applicable to the sale of products or services shall be added to the price and be paid by the purchaser unless the purchaser provides CAPELEC with a valid exemption certificate acceptable to CAPELEC and the appropriate tax authority.

Title to Goods and Risk of Loss

- All prices are ex works (EXW Montpelier, France; ICC INCOTERM 2000) unless otherwise agreed in writing. Title and risk of loss for all products shall pass to the purchaser upon delivery by CAPELEC to a freight forwarder or purchaser's designate, regardless of shipping terms, method of payment or transport cost.

Transit Damage Claims

- Ex works is our term of sale. Therefore, once the goods have been loaded for shipping, they become the responsibility of the purchaser.

- It is the responsibility of the purchaser to receive the entire shipment as tend-

red and file a claim with the carrier if the shipment or any part thereof is missing or damaged upon delivery. If there is any loss or damage at the time of delivery, it is essential to make the appropriate statement on the delivery receipt.

- Prompt inspection is of essence. Any concealed damage should be reported to the delivering carrier within 15 days of receipt of the shipment. Prompt filing of the claim with all necessary documents is required for fast settlement. All claims must be accompanied by the following documents:

- Original paid freight bill - Certified copy of original bill of lading - Duplicate of invoice covering shipment - Duplicate of destination inspection report - Duplicate of delivery receipt noting shortage or damage.

Acceptance

- Goods and services offered or quoted for are subject to availability. Orders are subject to acceptance by CAPELEC.

Cancellation

- Modifications and add-ons to orders can only be accepted within the next working day after the original time of order placement. Thereafter add-ons will be considered as new orders. Orders cannot be cancelled by the purchaser except upon terms that will fully compensate CAPELEC against loss or by CAPELEC's prior written agreement.

Returns

- Any products sold by CAPELEC may be returned only in accordance with the warranty provisions applicable to the product concerned. Before returning any product for whatever reason, the purchaser must obtain CAPELEC's prior written approval and instructions. Return and external fees are at the purchaser's expenses.

Force Majeure

- CAPELEC shall not be liable for any loss, damage, delay, changes in shipment schedules or failure to deliver caused by accident, fire, earthquake, flood, meteorological exigency, animal or human disease, strike, lock-out, labour disputes, industrial action, riot, hooliganism, civil commotion, insurrection, revolution, terrorist acts, war whether declared or not, the elements, natural catastrophe, boycott, embargo, mutiny, failure of carriers, unavailability of transport facilities, exchange rates, fuel prices, power failures, government requi-

rements or prohibitions, import or export restrictions, law enforcement, computer virus, software failure, acts of God or public enemy, prior orders from customers or limitations of CAPELEC, its suppliers' or its subcontractors' production, marketing activities or services, or any other causes or contingencies beyond CAPELEC's control. CAPELEC shall in no event be liable for direct, indirect, ordinary or extraordinary, special, incidental damages or consequential loss including without limitation lost profits or loss of use or production or capital, whether based on contract, tort or any other legal theory.

Liability

- CAPELEC shall in no event be liable for direct, indirect, ordinary or extraordinary, special, incidental damages or consequential loss including without limitation lost profits or loss of use or production or capital, whether based on contract, tort or any other legal theory. The remedies of the purchaser set forth herein are exclusive and the liability of CAPELEC with respect to any contract, or anything done in connection therewith such as the performance of breach hereof, or from the manufacture, sale, delivery, resale, installation or use of any products whether arising out to contract, negligence, strict tort, or under any warranty or otherwise, shall not exceed the purchase price of the products upon which liability is based.

Severability

- Each portion and provision of the present terms is severable and if any provision is held invalid or unenforceable the remainder shall nevertheless remain valid and in full force and effect.

Unique ecosystem identifier

The key identifier FR002721_05KUZN attesting to the registration in EEE sector producers, in application of article L.541-10-13 of the Environment Code, has been attributed by ADEME to CAPELEC (381 622 976 00037). This identifier attests to its compliance with its obligation to record in the register of Electrical and Electronic Equipment producers and the completion of its marketing declarations to ecosystem.

Jurisdiction

- All sales, agreements and contracts shall be governed by and construed in accordance with the laws of France.

